



HIGH HOPES  
Therapeutic Riding, Inc.

*A Tradition of Excellence in Therapeutic Riding, Inc.*

Greetings!

Thank you for your interest in the PATH Intl. Approved Instructor Training Course offered at High Hopes Therapeutic Riding, Inc., in Old Lyme, CT. There are three levels of PATH Intl. Riding Instructor certification: Registered, Advanced, and Master. This brochure contains the materials needed to complete the requirements for the *Registered Certification* level which is designed to prepare individuals to plan and implement safe and effective therapeutic riding classes. The course consists of over 85 hours of lecture material and more than 100 hours of practicum work. Subjects include all areas of disabilities, plus anatomy, kinesiology, physiology, psychology, and the operation and management of a therapeutic riding facility. Candidates who successfully complete the course will have the option of taking an exam to become PATH Intl. Registered or Advanced Instructors.

High Hopes offers training for the Registered Instructor certification twice a year beginning in January and in August. The January course offers some flexibility during the lecture component with lectures typically occurring Thursday through Saturday/Sunday. The August course format requires that you to be at High Hopes all day Monday through Friday most weeks as well as on some weekends.

Enclosed you will find a general course brochure, and application materials for our **2017** PATH Int'l Approved Instructor Training Courses.

Our winter/spring course begins on **January 18, 2017** and ends in **April 2017**. *The application materials and application fee for the course starting January 2017 must be received by **December 1, 2016**.*

Our summer/fall begins on **August 23, 2017** and ends in **November, 2017**. *The application materials and application fee for the course starting August 2017 must be received by **July 12, 2017**.*

Full payment for the course tuition is due upon acceptance into the program. Decisions on acceptance are made within one week of the application deadline. If a candidate needs extra time (beyond the scheduled timeframes of beginning of April and beginning of November) to complete the course, additional costs may be incurred. This will be discussed and determined on an individualized basis.

This course offers a self-directed practicum component. Due to this flexibility actual completion dates may vary based on participant and schedules. We encourage you to arrange for an individual consultation prior to enrolling if you have questions or concerns about how long your program will be.

Participants who wish to take the PATH Intl. Advanced exam at the completion of the course will have additional requirements to fulfill. Foreign students also have additional requirements and should contact the office for details.

We look forward to welcoming you into the High Hopes family. Please do not hesitate to contact me directly at 860-434-1974, Ext. 124 if you have any questions or concerns.

Sincerely,

*Patti*

Patti Coyle  
Training and Education Director



**HIGH HOPES**

**Therapeutic Riding, Inc.**

*A Tradition of Excellence in Therapeutic Riding, Inc.*

## **What is PATH Intl. Instructor Certification Status?**

Like many sports, horseback riding and other equine activities provide challenges as well as reward. For a participant with a disability, however, these challenges can be even greater. The Professional Association of Therapeutic Horsemanship International (PATH Intl.) was formed to establish safety standards, provide educational opportunities, and offer networking for its estimated 850 member centers and 7,600 individual members in countries all over the world, who help and support more than 54,000 men, women and children with special needs each year through a variety of equine assisted activities and therapies programs.

In order to ensure that riders at PATH Intl. operating centers are receiving safe and therapeutically beneficial riding lessons, PATH Intl. has established a method of certifying an instructor's level of teaching ability through successful completion of a PATH Intl. Approved Training Course. All candidates who complete this PATH Intl. Approved Training Course will take the PATH Intl. Registered Instructor exam before the end of the course.

Candidates who successfully complete all training course requirements and pass the PATH Intl. Registered Instructor Examination will be granted PATH Intl. Registered Instructor status. The PATH Intl. Registered Instructor level provides certification for teaching participants with physical and cognitive disabilities.

Candidates may also have the option of taking the Advanced level exam at the end of the course. These candidates must pay an additional examination fee and meet the Advanced level criteria before taking the exam. Please refer to the PATH Intl. Advanced Certification Booklet for details regarding the levels of certification and their requirements.

Candidates who achieve a level of PATH Intl. Instructor Certification status will be required to maintain PATH Intl. Individual Membership, submit copies of current CPR and First Aid cards, and complete the required continuing education hours (Registered Level = 20 clock hours; Advanced Level = 20 clock hours) on an annual basis. An Annual Compliance Form will be sent to instructors by PATH Intl.

For additional information regarding the PATH Intl. Instructor Certification Program and PATH Intl. Individual Membership, please contact the PATH Intl. office at (800) 369-7433 or write to PATH Intl. at P.O. Box 33150, Denver, CO 80233.



**HIGH HOPES**  
**Therapeutic Riding, Inc.**

*A Tradition of Excellence in Therapeutic Riding, Inc.*

**Instructor Training Course Pre-requisite Criteria**

- Proof of PATH INTL. Membership
- Must be at least 21 years of age (applicants under the age of 21 will be considered on an individual basis)
- Current Resume
- A letter of intent, addressing reasons for applying to course and intentions upon graduation
- PATH INTL. Resume Form (no more than two years old)
- Personal letter of reference (no more than two years old)
- Professional letter of reference (no more than two years old)
- Proof of previous experience with disabilities
- Copies of current CPR and First Aid Cards
- Horsemanship skills checklist or adequate proof of basic stable management and horse knowledge
- Submission of riding video or in-person demonstration of riding skills showing sufficient prior riding experience to successfully complete included pattern: *video must show walk, trot (both sitting and posting), and canter in both directions*
- Proof of previous volunteer experience of at least one year at a therapeutic riding program strongly encouraged.
- Experience teaching non-therapy riding strongly encouraged.

Please note that applicants who do not meet the entrance criteria after the first week will not be accepted into the Instructor Training Course. All monies paid to High Hopes, with the exception of the \$ 200.00 non-refundable registration fee and a portion of the tuition cost, will be returned and the applicant will be asked to withdraw from the program.



**HIGH HOPES**

**Therapeutic Riding, Inc.**

*A Tradition of Excellence in Therapeutic Riding, Inc.*

## **HIGH HOPES APPROVED INSTRUCTOR TRAINING COURSE CANDIDATE CODE OF CONDUCT**

To ensure that the safety and best interests of all program participants and their families, High Hopes staff, volunteers, and our equine partners are being met, High Hopes requires that Instructor Candidates adhere to a set of professional standards and prescribed guidelines.

Candidates will be evaluated on the following during their time at High Hopes:

**Behavior:** Behavior is expected to be courteous, orderly, respectful and professional at all times. Instructor Candidates are viewed as High Hopes representatives by our participants, volunteers, parents, caregivers, educators and the general public, and are therefore expected to act in an appropriate and professional manner at all times. Behavior is expected to demonstrate the high standards adhered to by all High Hopes staff.

**Effective Communication:** Effective communication is essential for promoting and supporting a professional and respectful working environment. The gifts of varying backgrounds and cultures offer diversity and therefore opportunities for increased learning and awareness from which we all benefit. Being open to differences of opinion or perspectives enhances the experiences of all involved when approached through ongoing considerate and welcoming behavior and open communication. ITC Candidates are expected to be able to communicate in a constructive manner; one that enhances all relationships with staff, participants, parents/ caregivers and volunteers as well as your fellow ITC Candidates.

**Safe Environment:** While at High Hopes, a safe and productive working environment is of paramount importance. ITC Candidates are expected to be aware of and adhere to all pre-determined safety procedures and best practices as established by PATH, Int'l and High Hopes Therapeutic Riding.

**Proper Attire:** Proper attire is necessary in order to maintain a professional image and safe, constructive working conditions. When in an instructional role, britches and boots are required. Appropriate footwear is required when working with our horses or in the barn/program environment. This includes your 'ITC' clothing and name tag buttons. Participants, volunteers and parents/caregivers should be able to easily identify you in your ITC role.

**Confidentiality:** At High Hopes, we place great importance on protecting the confidential information of our participants, our staff and our volunteers. "Confidential Information" includes, but is not limited to, personally identifiable information such as surnames, telephone numbers, addresses, e-mails, etc., as well as the non-public business records of High Hopes. In particular, medical information about participants, and information about their disabilities or special needs, must be protected as Confidential Information. ITC Candidates shall never disclose confidential information to anyone other than High Hopes staff. ITC Candidates must seek staff permission before taking any pictures or videos or before sharing any information via social media.

We value and appreciate each and every ITC Candidate for the commitment, experience, knowledge and diversity you bring to share with our High Hopes Community.



**HIGH HOPES**

**Therapeutic Riding, Inc.**

*A Tradition of Excellence in Therapeutic Riding, Inc.*

To access the ***PATH INTL. Registered Instructor Booklet*** in PDF format please visit the following web address:

<http://www.pathintl.org/images/pdf/resources/certifications/PATH-Intl-Registered-Application-Booklet-3-2015.pdf>

<http://www.pathintl.org/images/pdf/resources/certifications/PATH-Intl-Registered-Certification-Booklet-3-2015.pdf>

To access the ***PATH INTL. Advanced Instructor Booklet*** in PDF format please visit the following web address:

<http://www.pathintl.org/images/pdf/resources/certifications/PATH-Intl-Advanced-Riding-Cert-Booklet.pdf>

<http://www.pathintl.org/images/pdf/resources/certifications/PATH-Intl-Advanced-Riding-Cert-Booklet.pdf>



## **HIGH HOPES**

**Therapeutic Riding, Inc.**

*A Tradition of Excellence in Therapeutic Riding, Inc.*

### **HIGH HOPES INSTRUCTOR TRAINING COURSE LIST OF SUGGESTED REFERENCES**

*Aspects and Answers* – available from the Cheff Therapeutic Riding Center at (269) 731-4471.

*Manual of Horsemanship*, 9<sup>th</sup> or 10<sup>th</sup> Edition, Barrons. Available from the U.S. Pony Club at (606) 254-7669.

*PATH INTL. Operating Center Standards and Accreditation Manual*, available from PATH INTL. at (800) 369-7433.

*PATH INTL. Precautions and Contraindications to Therapeutic Riding*, (included in Operating Center Standards and Accreditation Manual), available from PATH INTL. at (800) 369-7433.

*Therapeutic Riding I: Strategies for Instruction, Books 1 & 2*, edited by Barbara Engel. Available from the editor at 10 Town Plaza, Suite 238, Durango, CO 81301, (970) 563-9599.

*Therapeutic Riding II: Strategies for Rehabilitation*, edited by Barbara Engel. Available from the editor at 10 Town Plaza, Suite 238, Durango, CO 81301, (970) 563-9599.

*The United State Pony Club Manual of Horsemanship*, by Susan Harris. Available from U.S. Pony Club at (606) 254-7669.

*CHA Composite Horsemanship Manual*. Available from CHA at (800) 399-0138.

### **OPTIONAL REFERENCES**

*The Therapy Horse*, by Jan Spink, M.A. Available from Barbara Engel Therapy Services at (970) 563-9599.

*Special Physical Education*, by John Dunn and Hollis Fail. Wm. C. Brown Publisher, Dubuque, Iowa.

*PATH INTL. Instructor Educational Guide*. Available from PATH INTL. at (800) 369-7433.

*101 Arena Exercises*, by Cherry Hill. Available from Story Communications, Inc. at (800) 441-5700.

*Horses, Gaits, Balance, Movement* by Susan Harris. Available from Howell Book House at (800) 428-5331.

*Horses, Guide to Selection, Care & Enjoyment of Horses*, Second Edition, by W. Evans. Available from W.H. Freeman Publishing, 41 Madison Avenue, New York, NY 10010

*Children with Disabilities*, Mark L. Batshaw, M.D., available from Paul H. Brooks Publishing Company.

*Person to Person*, Lindsay Gething, available from Paul H. Brooks Publishing Company.

*The USPC Guide to Longeing and Ground Training*, Susan E. Harris (1997), available from US Pony Clubs, The Kentucky Horse Park, Iron Works Pike, Lexington, KY 40511 (606)254-7669



**HIGH HOPES**  
**Therapeutic Riding, Inc.**

*A Tradition of Excellence in Therapeutic Riding, Inc.*

**HIGH HOPES INSTRUCTOR TRAINING COURSE**  
**List of Staff Faculty**

- LEAD**      **Carolyn Jagielski, P.T.**      PATH Intl. Registered Instructor  
HPCS Registered  
History of Therapeutic Riding  
Physical Disabilities, Human Development, Anatomy, Physiology, Kinesiology, Mounting and  
Dismounting, Therapy Horse, Practicum Mentor
- LEAD**      **Kitty Stalsburg**      PATH Intl. Master Instructor  
High Hopes Executive Director  
History of PATH Intl., Teaching Techniques, Lesson Plans, Goals,  
Team Teaching, Instructor Certification, Accreditation, Tack and Special Equipment,  
Volunteers, Therapy Horse, Practicum Mentor
- LEAD**      **Patti Coyle**      PATH Intl. Advanced Instructor  
High Hopes Training and Education Director  
Practicum Mentor

**LIST of ADDITIONAL FACULTY and STAFF**

Barbara Abrams, PHD, LPC, Expressive Therapist, PATH Intl. Advanced Instructor  
Carrina Echeandia, Special Programs Coordinator, PATH Intl. Advanced Instructor  
Sarah Carlson, Special Programs Manager, PATH Intl. Advanced Instructor, Specialty: Driving Instructor  
Megan Ellis, Program Operations Manager, PATH Intl. Advanced Instructor  
Lauren Fitzgerald, Equine Resource Manager, PATH Intl. Advanced Instructor, Specialty: Driving Instructor  
Donna Latella, Occupational Therapist, PATH Intl. Registered Instructor  
Paula McHale, Finance Director  
Caitlin Nuhn, Program Director  
Dawn Nelligan, Certified Therapeutic Recreational Specialist, PATH Intl. Advanced Instructor  
Laura Moya, MFT, PATH Intl. Advanced Instructor  
Sara Slayton Qua, Development Director  
Holly Sundmacker, Equine Operations Director  
Anne Peterson, LPC, Registered Instructor  
Volunteer Manager  
Volunteer Coordinator



## **HIGH HOPES**

**Therapeutic Riding, Inc.**

*A Tradition of Excellence in Therapeutic Riding, Inc.*

**HIGH HOPES THERAPEUTIC RIDING, INC.  
PATH INT'L APPROVED INSTRUCTOR TRAINING COURSE  
TENTATIVE SCHEDULE  
JANUARY 18, 2017 to APRIL 2017**

*All lectures begin at 9 am unless otherwise specified by the instructor.*

Wednesday, 1/18/17	Welcome and General Orientation Tour of Facility; Discussion of expectations Verification of Registration Materials PATH Intl and a History of Therapeutic Riding The Horse – Introduction to the therapeutic benefits Equine Movement Analysis
Thursday, 1/19/17	Anatomy of the Rider Riding from an Anatomical Point of View Postural Alignment and Corrections – Exercises Mounting I Mounted Session – Using the Movement of the Horse for Therapy Medical Terminology
Friday, 1/20/17	Human Growth and Development Posture and Balance Reactions Mounting and Dismounting – design, body mechanics, practicum Mounted Session – Effects of Equipment as it relates to posture Movement Analysis - Human
Saturday, 1/21/17	Volunteer Management Orientation and Practicum Mounting III (Review Sidewalker Receiving Responsibilities during Mounts/Dismounts) Role Play and Practicum Procedures
Monday –Wednesday 1/23/17-1/25/17	Practicum Work Volunteer Sidewalker and Leader Role Play Specialty Activities
Thursday, 1/26/17	Physical Disabilities Neurological Impairments
Friday, 1/27/17	Physical Disabilities Orthopedic Impairments Precautions and Contraindications



Saturday, 1/28/17	The Effective Instructor Rider Assessment and the Instructional Team Lesson Planning and Task Analysis Teaching techniques and strategies Mounting and Dismounting Role Play
Sunday, 1/29/17	Mounting and Dismounting
Monday 1/25/17 Wednesday 2/1/17 Thursday 2/2/17	Practicum and Specialty Activities Practicum and Specialty Activities Practicum and Specialty Activities
Thursday, 1/31/17	Therapy Horse I Equine Management Health Care Role Play and Barn Practicum
Friday, 2/3/17	Cognitive and Psychosocial I
Saturday, 2/4/17	Cognitive and Psychosocial II
Monday-Wednesday 2/5/17 - 2/7/17	Practicum Lesson Observation Specialty Activities
Thursday, 2/9/17	Facility and Risk Management CAT and Mock Accreditation Visit (1/2 day) Business Organization and Fundraising (1/2 day)
Friday, 2/10/17	Therapy Horse Part II (barn practicum day) Equine Selection, Evaluation, Training Training Techniques and Handling Tack and Equipment fit and usage
Saturday, 2/11/17	Sensory Integration in the TR Setting Speech and Language
Monday – Thursday 2/13/17 – 2/18/17	Horse Presentations; Paper Presentations Practicum
Monday, 2/20/17 - Saturday 2/25/17	BREAK WEEK-NO CLASSES
Monday 2/27/17- April 2017	Practicum
April 2017	PATH Intl. Registered Instructor Certification Testing

**Intensive ITC Course:**

Wednesday, 1/18/17-  
Beginning of April, 2017 PRACTICUM

TBD On-line CAT and On-line PATH Intl Registered Open-book Exam



**HIGH HOPES**  
**Therapeutic Riding, Inc.**

*A Tradition of Excellence in Therapeutic Riding, Inc.*

**HIGH HOPES THERAPEUTIC RIDING, INC.**  
**PATH INT'L APPROVED INSTRUCTOR TRAINING COURSE**  
**TENTATIVE SCHEDULE**  
**AUGUST 23, 2017 to NOVEMBER 2017**

***All lectures begin at 9 am unless otherwise specified by the instructor.***

Wednesday, 8/23/17	Welcome and General Orientation Tour of Facility; Discussion of expectations Verification of Registration Materials PATH Intl and a History of Therapeutic Riding The Horse – Introduction to the therapeutic benefits Equine Movement Analysis
Thursday, 8/24/17	Anatomy of the Rider Riding from an Anatomical Point of View Postural Alignment and Corrections - Exercises Mounted Session – Using the Movement of the Horse for Therapy Medical Terminology <i>Attend Volunteer Orientation and Training</i>
Friday, 8/25/17	Human Growth and Development Posture and Balance Reactions Mounting and Dismounting – design, body mechanics, practicum Mounted Session – Effects of Equipment as it relates to posture Movement Analysis - Human
Monday 8/28/17	Physical Disabilities Part I Neurological Impairments Role Play
Tuesday 8/29/17	Physical Disabilities Part II Orthopedic Impairments Precautions and Contraindications Role Play Mounting and Dismounting
Wednesday 8/30/17	Volunteer Management Orientation and Practicum (Review Sidewalker Receiving Responsibilities during Mounts/Dismounts) Role Play and Practicum Procedures
Thursday 8/31/17	The Effective Instructor Lesson Planning and Task Analysis The Effective Instructor/ Goals and Objectives Teaching Strategies and Techniques Practicum and Role Play Mounting and Dismounting

Friday 9/1/17	The Therapy Horse – Part I Equine Management Health Care Role Play and Barn Practicum
Tuesday, 9/5/17	Therapy Horse – Part II Equine Selection, Evaluation, Training Training Techniques and Handling Tack and Equipment fit and usage
Wednesday, 9/6/17	Facility and Risk Management PATH Intl. Standards and CAT Course Mock Accreditation Visit; Speech and Language
Thursday, 9/7/17	Human Behavior and Psychology Psychosocial Disabilities ESMHL Role play/ ELP
Friday, 9/8/17	Cognitive Disabilities Cognitive Games and Exercises Role play
Monday, 9/11/17	Specialties Activities (vault/drive/ELP) Volunteer Sidewalker and Leader Role Play
Tuesday, 9/12/17	Business and Administration (1/2 day) Sensory Integration (1/2 day) Games and Exercises
Wednesday, 9/13/17- Beginning of November, 2017	PRACTICUM
November 2017	PATH Intl. Registered Instructor Certification Testing
TBD	On-line CAT and On-line Registered Open Book Exam to be taken by Candidates



## HIGH HOPES

Therapeutic Riding, Inc.

*A Tradition of Excellence in Therapeutic Riding, Inc.*

### HIGH HOPES INSTRUCTOR TRAINING COURSE PRACTICUM PROCEDURE

Each instructor candidate is responsible for the completion of a minimum of 100 hours of practicum experience. Twenty-five percent of these hours must be instructor hours for the registered instructor certification program. A Practicum Hours Sheet has been provided for you to assist in the documentation of these hours.

There are three phases of Practicum to be completed -- Phase I "Demonstration of Skills," Phase II "Practicum Progression," and Phase III "Practicum Final Evaluation." During Phase I, you will have the opportunity to demonstrate basic equine, safety, sidewalking and mounting skills necessary for advancement to Phase II. This will include the necessary experiences of volunteering in and observing classes prior to teaching. After completing Phase I, you must set up an informal and interactive meeting with an Instructor Training faculty to establish your personal goals.

In Phase II, a step by step process will be implemented to enhance your teaching experience. This phase allows the following progression of teaching experiences:

- Volunteer/staff riding lessons
- One on one lesson with Program Rider
- Small group (2-3) lessons with Program Riders
- Large group (3-5) lessons with Program Riders
- Additional teaching times when you are taking a leadership role in the practicum activity

Practicum mentors will complete detailed evaluations of your performance. A minimum of 12 written evaluations are required, the rest can be written or verbal. It is your responsibility to provide your mentor, **at least 24 hours in advance**, with an evaluation form and a written lesson plan. Please note that the written lesson plans are **mandatory** prior to teaching for all 25 hours. (There are two different evaluation forms in the practicum section of your notebook. You and your mentors will decide together which form to utilize.)

Upon the completion of Practicum Phases I and II, you must set up a second meeting with an Instructor Training Course Faculty to assess your personal progress, and to schedule Phase III. During Phase III you will complete the PATH Int. Registered certification testing to include teaching a group lesson and the riding.

We hope you will enjoy your learning experiences here at High Hopes. We look forward to working with each of you.



HIGH HOPES  
Therapeutic Riding, Inc.

A Tradition of Excellence in Therapeutic Riding, Inc.

## HIGH HOPES INSTRUCTOR TRAINING COURSE APPLICATION FORM

*Please type or clearly print in ink*

**All Applicants must be a current PATH Intl. Individual Member.**

**This page and the checklist on the next page must be completed before mailing.**

All prerequisite criteria must be met to complete the application process. Your information packet contains a list of current prerequisites.

Name \_\_\_\_\_

Mailing Address \_\_\_\_\_ City \_\_\_\_\_ State \_\_\_\_\_ Zip \_\_\_\_\_

Phone: Day \_\_\_\_\_ Evening \_\_\_\_\_ Cell \_\_\_\_\_ E-Mail \_\_\_\_\_

Therapeutic Riding Affiliation: \_\_\_\_\_

Briefly describe your experience with individuals who have disabilities (use additional sheets as necessary): \_\_\_\_\_

Which course best meets your needs? \_\_\_\_\_ August \_\_\_\_\_ January \_\_\_\_\_ Other

Do you require housing? (Provided at an additional fee) \_\_\_\_\_ Yes \_\_\_\_\_ No

Do you have any special needs/concerns? \_\_\_\_\_

At the completion of this course, what level of PATH Int'l Instructor Recognition would you like to achieve?

\_\_\_\_\_ Registered \_\_\_\_\_ Advanced\*\* \_\_\_\_\_ Undecided \_\_\_\_\_ Other

Please indicate interest in other PATH, Intl. Specialty areas: \_\_\_\_\_ Interactive Vaulting \_\_\_\_\_ Driving \_\_\_\_\_ ESMHL \_\_\_\_\_ Other

### **FEES**

**\$200.00 Non-Refundable Application Fee** \$ \_\_\_\_\_

\$3,525.00 Tuition \* (Due upon acceptance to course; cash or check discount pay \$3,475.00) \$ \_\_\_\_\_

\$1,800.00 Housing (Cash or check only) \$ \_\_\_\_\_

\$200.00 Security Deposit for Housing (Cash or check only) \$ \_\_\_\_\_

**TOTAL DUE – PAYABLE TO HIGH HOPES:** \$ \_\_\_\_\_

**Please return the application form, \$200 application fee and other required materials to:  
High Hopes Therapeutic Riding, Inc., 36 Town Woods Road, Old Lyme, CT 06371**

A 100% refund (not including the application fee) will be given if withdrawal occurs no less than three weeks prior to start date of course. After this period, all fees are non-refundable.

\*Limited Financial Aid applications are available upon request.

\*Additional fees may be due if candidate needs additional time (beyond published deadlines) to complete the course.

\*Extra fee and faculty recommendation required for Advanced Level

\*Tuition include fees include cost of onsite PATH Intl. certification testing.



HIGH HOPES  
Therapeutic Riding, Inc.

*A Tradition of Excellence in Therapeutic Riding, Inc.*

**HIGH HOPES INSTRUCTOR TRAINING COURSE  
APPLICATION FORM  
(continued)**

**APPLICATION CHECKLIST**

I am a current PATH Intl. Individual Member. Membership # \_\_\_\_\_

I have enclosed the following (check each item):

- Letter of Intent
- Resume
- Video or demonstration of Riding Pattern
- High Hopes Instructor Training Course Application (*this form*)
- PATH Riding Instructor Resume
- Personal Reference
- Professional Reference
- PATH Intl. Registered Instructor Essay Questions
- PATH Intl. Documentation of Mounted Teaching Hours (*to be completed during course*)
- Horsemanship Skills Checklist
- A copy of my current CPR card (front and back)
- A copy of my current First Aid card (front and back)
- A copy of PATH Intl. membership card
- PATH Intl. Code of Conduct
- PATH Intl. Center Reference (Advanced Only)

I have kept a copy of all the paperwork listed above.

Height (required): \_\_\_\_\_ \*Weight (required): \_\_\_\_\_ Preferred Seat:  English  Western

Shirt/Fleece Size: \_\_\_\_\_ Birth Date: \_\_\_\_\_

**\*Please note: High Hopes horses have a weight limit of 180 lbs. If you exceed this weight limit, please contact High Hopes Training and Education Director to discuss options.**

**Registered Only:**

- I am at least 21 years of age.
- I will have completed \_\_\_\_\_ hours of teaching riding (must be at least 25 hours) by the end of the training course.
- I understand that I must make a copy of my completed examination, to keep for my records, before returning the original to PATH Intl.

**Advanced Only:**

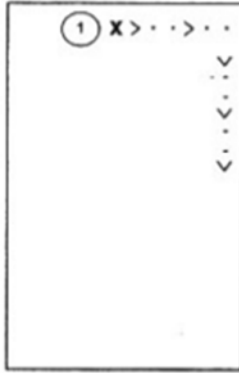
- I am at least 21 years of age.
- I have completed \_\_\_\_\_ hours of therapeutic riding teaching experience at a PATH Intl. member operating center (must be at least 120 hours) and with the applicable PATH Intl. Documentation.
- I have completed the Teaching Hours Form.

# Applicant Riding Demonstration

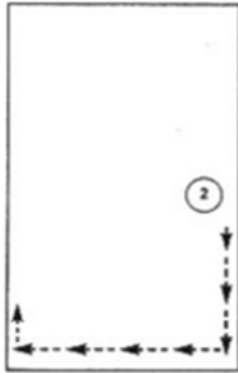
In order to successfully pass this segment, all candidates must wear an ASTM/SEI approved helmet. Candidates will be required to demonstrate their own riding ability by riding the following pattern.

- Warm-up
  - Ride at a walk, trot (jog), and canter (lope) both directions of the arena
  - Change the rein through the diagonal
- Circle
  - Back
  - Halt

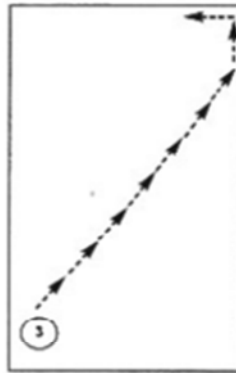
After a brief warm-up, execute the following pattern to demonstrate your riding skills:



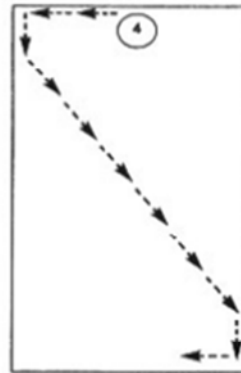
1. Halt. Proceed at the walk



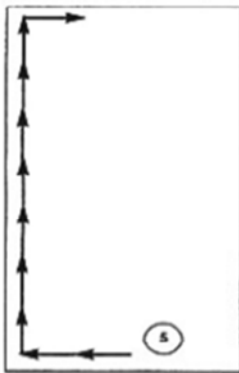
2. Posting Trot



3. Change rein across the diagonal at posting trot



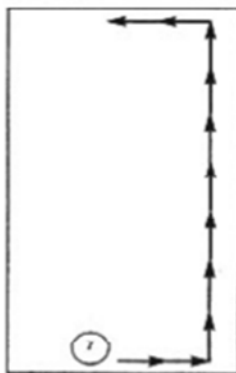
4. Change rein across diagonal at a sitting trot / jog



5. Canter / Lope right rein



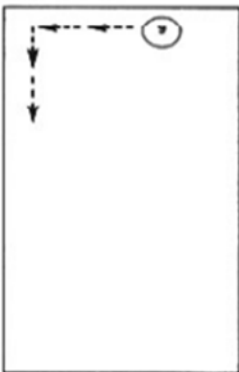
6. Posting Trot  
-Large half circle right  
-Large half circle left



7. Canter / Lope  
left rein



8. Sitting trot / jog large circle



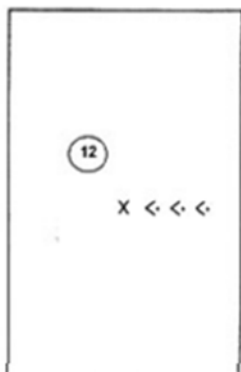
9. Sitting trot / jog



10. Walk forward into the center of the arena



11. Halt & back 3 - 4 steps in center of arena



12. Walk forward, halt & dismount in center of arena



## **Riding Instructor Resume**

Please type or print clearly in ink. Please include a copy of your actual resume as well.

Name: \_\_\_\_\_ Phone: \_\_\_\_\_

Address: \_\_\_\_\_

City: \_\_\_\_\_ State: \_\_\_\_\_ Zip: \_\_\_\_\_

Are you a licensed therapist?    PT            OT            Other            Therapist: \_\_\_\_

\_\_\_\_\_ Are you a PATH Intl. Individual member:    Yes    No

If affiliated with an operating center, list name: \_\_\_\_\_

### **EDUCATION**

High School: \_\_\_\_\_ Year: \_\_\_\_\_ Diploma: \_\_\_\_\_

College or Vocational: \_\_\_\_\_ Year: \_\_\_\_\_ Diploma: \_\_\_\_\_

Other Studies/Certificates/License: \_\_\_\_\_ Year: \_\_\_\_\_

Work Experience related to disabilities (other than therapeutic riding): \_\_\_\_\_

### **EQUESTRIAN BACKGROUND**

Number of years riding: \_\_\_\_\_ Owning a horse: \_\_\_\_\_ Number of years giving riding instruction: \_\_\_\_\_

Type of instruction: \_\_\_\_\_ Pony Club level: \_\_\_\_\_ 4-H level: \_\_\_\_\_

Your equestrian experience: \_\_\_\_\_

### **EXPERIENCE TEACHING RIDERS WITH DISABILITIES**

Do you work with any of the following disabilities? Check all that apply.

Mental Impairments	Cerebral Palsy
Learning Disabilities	Multiple Sclerosis
Communication Impairment	Muscular Dystrophy
Hearing Impairments	Brain Injury/Head Trauma
Visual Impairments	Spina Bifida
Emotional Impairments	Stroke/CVA
Autism	Post-Polio
Down Syndrome	Other _____

### **ADDITIONAL INFORMATION**

Professional organizations of which you are a member: \_\_\_\_\_

Articles/books/lectures you have done: \_\_\_\_\_

Signature: \_\_\_\_\_

Title: \_\_\_\_\_ Date: \_\_\_\_\_





## **Personal Reference**

*(This reference must be different from the PATH INTL. Center Reference and should NOT be a family member. Please type or print clearly in ink. Please attach extra sheets as necessary.)*

Candidate's Name: \_\_\_\_\_

Name of Reference: \_\_\_\_\_ Age: \_\_\_\_\_

Address: \_\_\_\_\_

City: \_\_\_\_\_ State: \_\_\_\_\_ Zip: \_\_\_\_\_

Phone: Day: \_\_\_\_\_ Evening: \_\_\_\_\_ Cell: \_\_\_\_\_

In what capacity does the reference know the candidate?

Evaluate the candidate's knowledge of horses and horsemanship:

Evaluate the candidate's understanding of individuals with disabilities and riding:  
(Please attach extra sheets if necessary)

Evaluate the candidate's riding skills:

Signature of Reference: \_\_\_\_\_ Date: \_\_\_\_\_



## **Professional Reference**

*(This reference cannot be the same as the Personal Reference.  
This reference must be familiar with applicant's riding instruction experience.)*

Instructor Certification Candidate's Name: \_\_\_\_\_

Name of Reference: \_\_\_\_\_ Age: \_\_\_\_\_

Address: \_\_\_\_\_

City: \_\_\_\_\_ State: \_\_\_\_\_ Zip: \_\_\_\_\_

Phone: Day: \_\_\_\_\_ Evening: \_\_\_\_\_

In what capacity does the reference know the candidate?

How many hours of lesson instruction has the applicant completed?

Evaluate the candidate's knowledge of horses and horsemanship:

Evaluate the candidate's understanding of individuals with disabilities and riding:  
(Please attach extra sheets if needed)

Signature of Reference: \_\_\_\_\_ Date: \_\_\_\_\_



## **PATH Intl. Registered Instructor**

### **Essay Questions**

*In your own words, answer the following questions. You may use this page or answer on a separate sheet of paper. Typed answers are suggested, as they are easiest to read.*

**CANDIDATE NAME:** \_\_\_\_\_

1. Indicate which style of riding you teach:

\_\_\_\_ Balance Seat      \_\_\_\_ Forward Seat

\_\_\_\_ Dressage      \_\_\_\_ Western

\_\_\_\_ Other: \_\_\_\_\_

Explain why you teach the style of riding indicated and what the benefits are for your riders.

2. Discuss your philosophy of teaching:
3. Describe your strengths as a therapeutic riding instructor:
4. Describe your opportunities for improvement as a therapeutic riding instructor:





## ***THE HIGH HOPES STORY***

*A Tradition of Excellence in Therapeutic Riding for more than 40 years*

High Hopes Therapeutic Riding, Inc., is a nonprofit organization located in Old Lyme, CT, committed to offering the benefits of therapeutic riding and related equine-assisted activities and therapies to children and adults with physical, behavioral and developmental disabilities.



We operate year-round, six days a week, with both indoor and outdoor riding facilities, as well as an extensive sensory trail. All of our instructors are certified through the Professional Association of Therapeutic Horsemanship International (PATH Intl.) and, in order to address our participants' needs in the most comprehensive way, our staff includes a Licensed Professional Counselor and Physical, Occupational, Speech and Expressive Arts Therapists. The incorporation of these professionals optimizes our students' achievements and helps in the training and development of our staff and volunteers.

Since 1997, High Hopes has been served as a training and education center for prospective therapeutic riding instructors from all over the world. Of the 800 programs that are members of PATH, High Hopes is one of only six centers in the country approved by PATH to offer their training course which attracts students from throughout the United States and abroad.

High Hopes serves the community through school in-service programs, field trips and experiential learning opportunities provided both on and off site. In addition, lectures and workshops are offered to our participants' families, our volunteers and the community at large on topics as diverse as horse care, parenting, American Sign Language, autism and sensory integration.

Our many years of experience with therapeutic riding has resulted in High Hopes becoming one of the largest and most well respected centers under the PATH Intl. umbrella. As leaders in our profession, we continually strive to improve the standards of safety and instruction associated with riding and working with horses.

Perhaps most important of all, High Hopes provides a safe, nurturing environment in which participants may learn new skills, achieve goals, gain independence and build self-esteem, with the guidance of some of the most highly qualified and experienced staff in the therapeutic riding profession.

